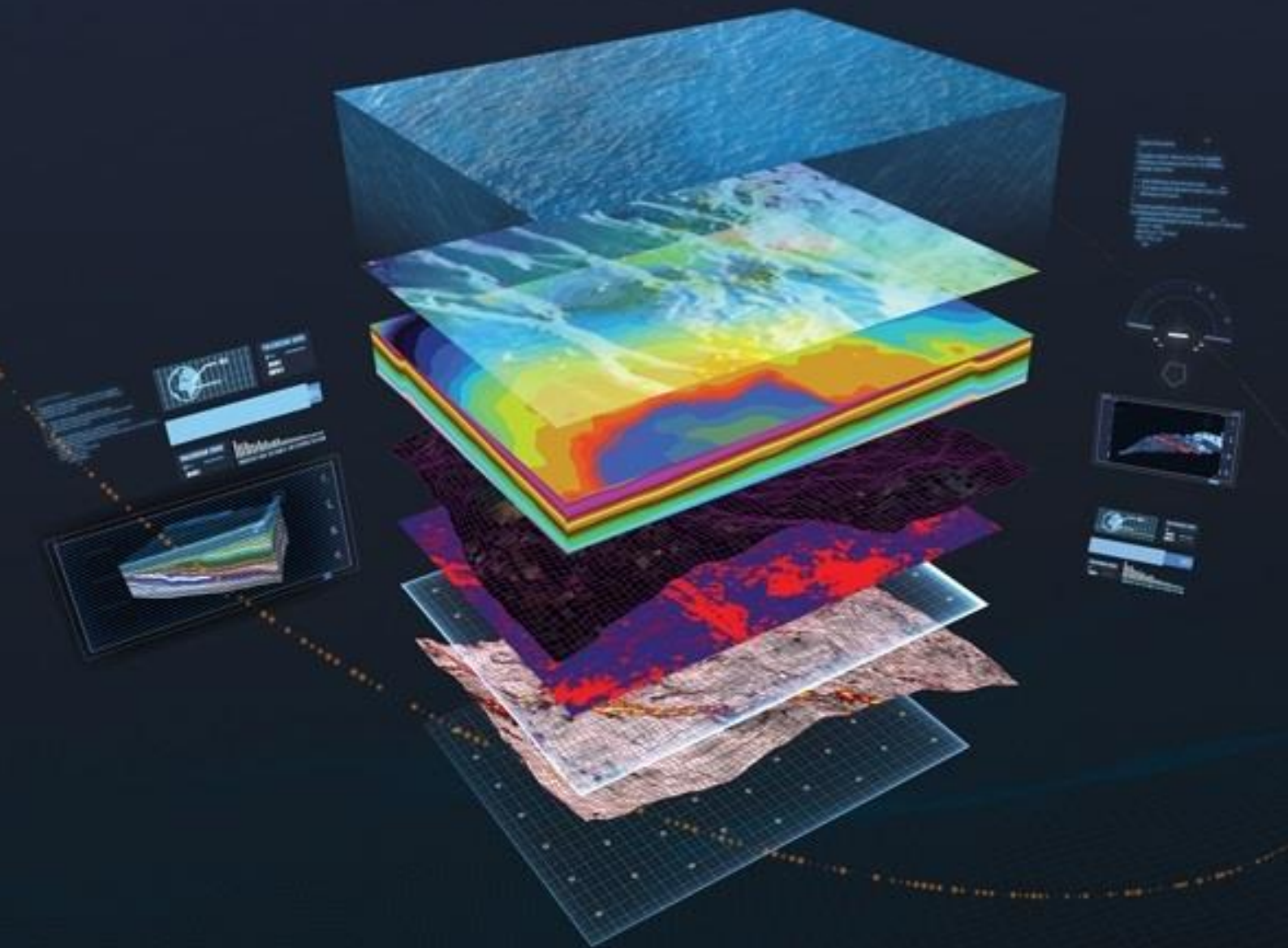


PALEOSCAN™ 2020

Data Connector *Release Notes*

Petrel® 2020



Global Seismic Interpretation Software



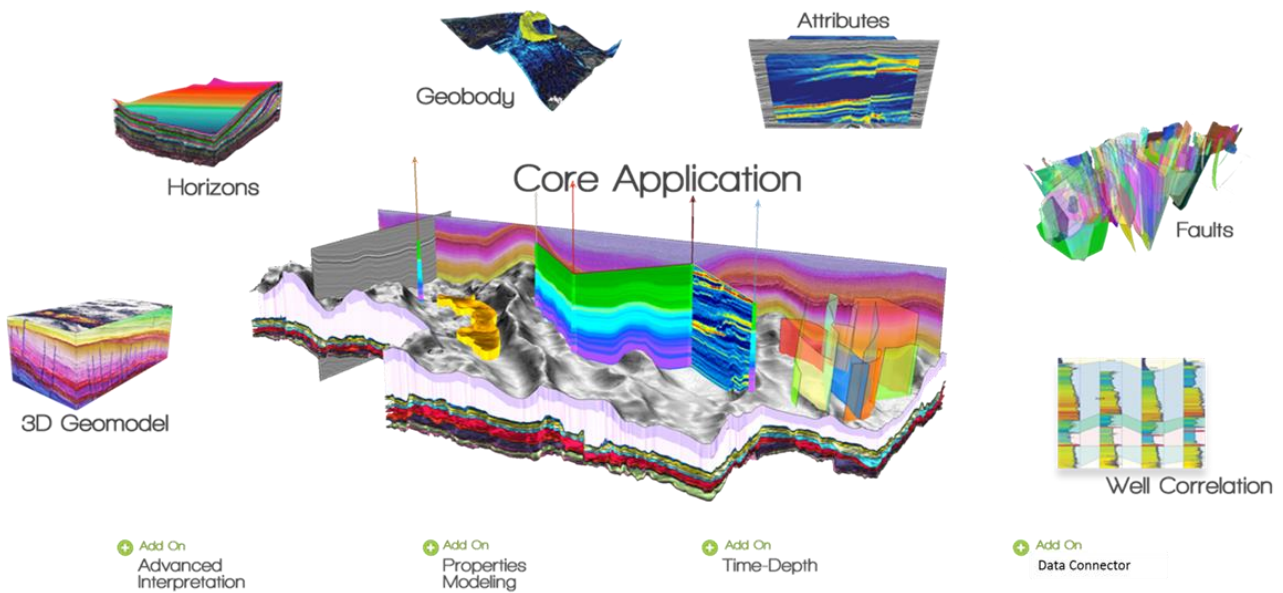
PaleoScan™ 2020

PaleoScan™ is a new generation of 3D seismic interpretation software, where geoscientists build a geological model while interpreting seismic volumes. With this new release, Eliis continues to innovate in seismic interpretation and brings more tools to interpret larger seismic datasets, with added speed and precision.

The 2020 version includes all updates counted in the last version and features, new and improved tools, for a better support of data constraints.

- A new **Multi-Z Model** is available.
- A new **Seismic Ghost** tool is available.
- The **Automatic Fault Extraction** attributes are enhanced. They are more accurate and adjustable.
- The **2D Interpretation Workflow** is enhanced.
- The **Horizon Management** is enhanced.
- A new **Reservoir Toolbar** is available, for advanced workflows.

This document lists all the new features and upgrades implemented in PaleoScan™ 2020. A detailed description of each tool can be found in the “User Guide” or on the web site (www.eliis.fr).



PaleoScan™ Data Connector 2020.2.0

Petrel® to PaleoScan™

Feature	Description
2D Horizon	Assign PaleoScan™'s 2D Lines to the transferred 2D Horizons, to see the intersections in PaleoScan™.
Triangle Mesh	Can now export Petrel® Triangle Meshes as 3D Faults in PaleoScan™.
Well Log	The export procedure is no more aborted if the Well Log has no Measured Depth information.
Time Depth Relationship	The Checkshot is not set as active Time Depth Relationship anymore if another Log is already assigned as active Time Depth Relationship.
	Fix Time Depth Relationship naming.

PaleoScan™ to Petrel®

Feature	Description
Volume	Improve transfer speed.
	Add a warning message if the CRS of the imported volume does not match the Petrel®'s project CRS.
2D Line	Fix wrong starting time issue.
Borehole	Fix unit conversion if Kelly Bushing or Measured Depth Start were in foot.
3D Fault	Can now import PaleoScan™ 3D Faults as Triangle Meshes in Petrel®.
Horizon	Improve horizon naming during export (special characters and name length)

Licensing

The PaleoScan™ Data Connector 2020 is included as an add-on module to PaleoScan™ 2020. It can be downloaded from Eliis web site. A personal user account is required. If you do not have a login and password to access Eliis extranet, you can fill up this [form](#).

Eliis provides you a free 30-day temporary license to evaluate PaleoScan™ 2020 including the Petrel® plug-in. The temporary license will give you a full access to the software with all add-on modules.

Compatibility

The PaleoScan™ Data Connector 2020.1 is only compatible with Petrel® 2020 and PaleoScan™ 2020:

PaleoScan™ Data Connector 2020.2	
Required PaleoScan™ versions	Required Petrel® versions
PaleoScan™ 2020 (64-bit) and above	Petrel® 2020 (64-bit)

Copyright Notice

All rights reserved. No part of this document may be reproduced, stored in a retrieval system, or translated in any form or by any means, electronic or mechanical, including photocopying and recording, without the prior written permission of Eliis SAS, 3 Rue Jean Monnet, 34830 Clapiers, FRANCE.

Disclaimer

The use of this product is governed by the PaleoScan™ Software License Agreement. Eliis makes no warranty, expressed, implied, or statutory, with respect to the product described herein and disclaims without limitation any warranty of merchantability or fitness for a particular purpose. Eliis reserves the right to revise the information in this manual at any time without notice.

Contact

For any information request, you can contact us.

Web: www.eliis.fr

Europe - Montpellier
Eliis SAS

contact@eliis.fr
+33 (0) 4.67.41.31.16

Brazil – Rio de Janeiro
Eliis Ltda

contactbr@eliis.fr
+55 (21) 99575-0071

North America - Houston
Eliis Inc.

contactus@eliis.fr
+1 281 404 1515

China - Beijing
Geoseismic Signal Corporation

tonyqiu@gssgeo.com
+86 10 8478-3912

Australia - Perth
Eliis Pty Ltd

contactau@eliis.fr
+61 466 303 546

Mexico - Merida
Apogee

info@apogeego.com
+52 1.993.113.6525

Malaysia – Kuala Lumpur
Eliis Sdn Bhd

contactmy@eliis.fr
+60 162 072 710